



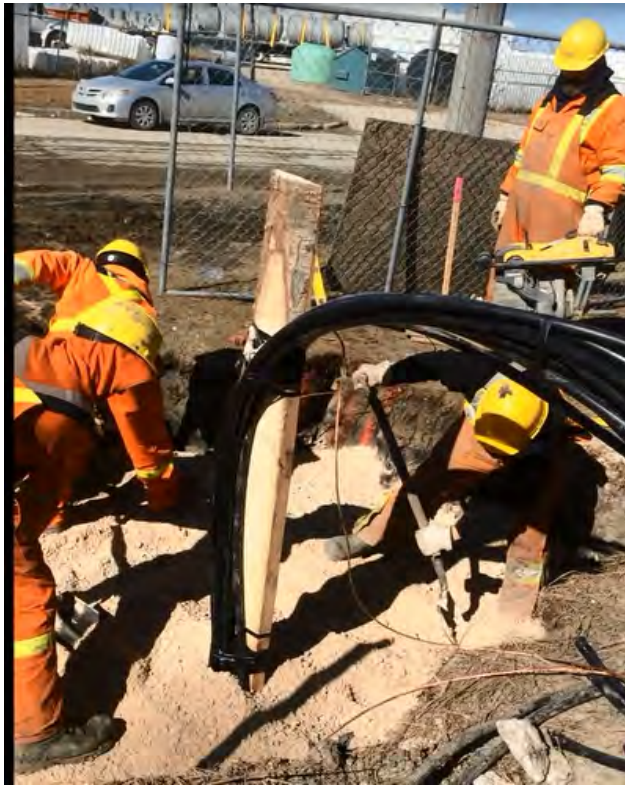
PACIFIC
— PATRIOT

Installation Instructions

Three Phase Box Pad

Installation Instructions

Excavate hole 12" deeper than the marker on the Transformer Pad



**Spread and compact 8"-12"-
 $\frac{3}{4}$ " -1" gravel**



**Bring base to
excavated hole**



Installation Instructions

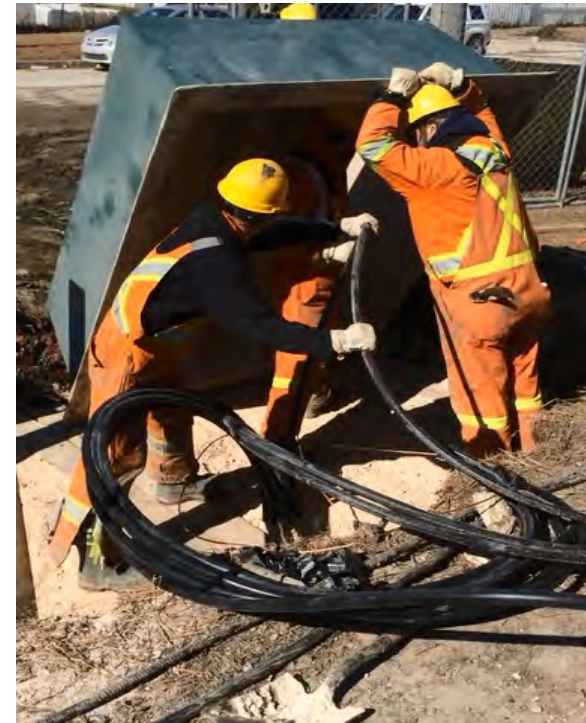
**Install and Level pressure treated
lumber for advanced leveling**



**Position Base in place by
hand**



Feed cable through hole



Installation Instructions

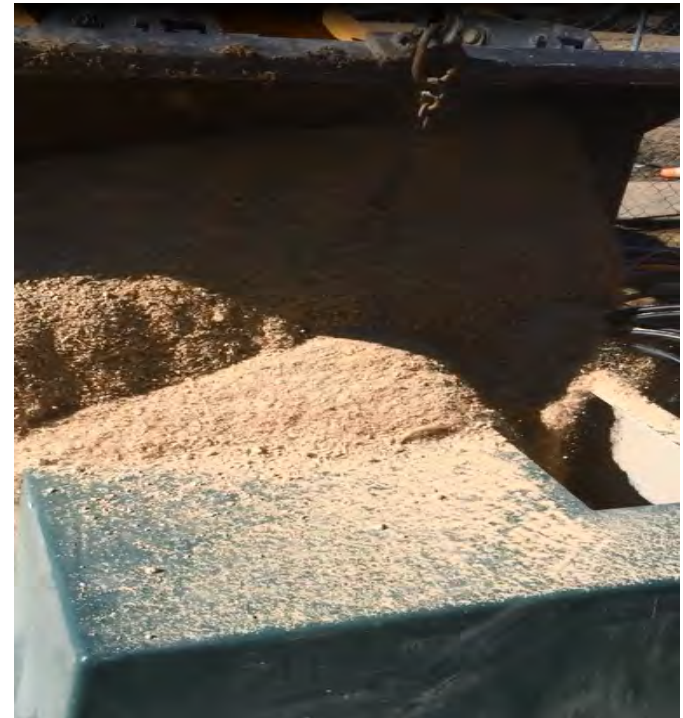
Position Base on Boards



Level Base

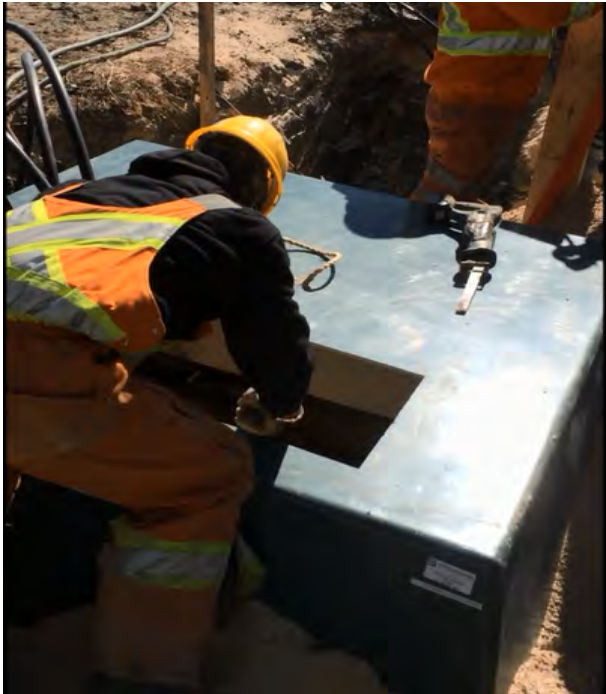


**One bucket of Gravel Inside cavity
if desired for backfill stability only**



Installation Instructions

Coil cable and backfill



**Backfill and
Install Bollards**



**Do not backfill with chunks
of frozen material or
large rock**

**Pack the Backfill by foot
tamping do not use
machines to tamp**



Results

- A Fiberglass base will last decades
- A Fiberglass base will stay level longer than concrete because it is flanged at the bottom
- A Fiberglass base will need less maintenance
- Keeps it easy to replace faulty cables
- Adaptable when changing transformers
- Easier and more efficient to install
- Lighter weight greater load capacity